

Save Time Using the Trimble State Mileage Report

Trimble Mobile Resource Management (MRM) eliminates the need to toil over weeks of inaccurate information to assemble the data required for quarterly IFTA Fuel Tax reports. The Trimble TrimWeb solution automatically logs the total number of miles your fleet vehicles drive both inside and outside your company's home state. The State Mileage report, an optional feature of TrimWeb, provides this information in an easy-to-read format without relying on drivers to keep track of their mileage or spending costly administrative hours trying to sort through information.

Managers can print the accurate report when needed, completing IFTA Fuel tax reports accurately without all the hassle of reviewing driver logs, calculating the math and worrying about the precision of the mileage reported by the field worker.

Automatic Interstate Vehicle Tracking

The Trimble CrossCheck 1900® automatically records the vehicles' position every minute, then transmits the data to TrimWeb every ten minutes. Based on the GPS data, TrimWeb determines when each vehicle crosses a state border as well as the total miles driven in each state.

To ensure data accuracy, the end date for the State Mileage Report must be at least eight days in the past. This timeframe allows TrimWeb ample time to receive any non-transmitted information still stored within the CrossCheck device.

Benefits

- Saves managers the time and aggravation previously spent compiling data from field workers
- Decreases costs and penalties for delays in submitting IFTA reports
- Lessens administrative work assigned to field workers
- Reduces errors and guesswork that occur when drivers manually log driving time



Generate Accurate Reports Anytime

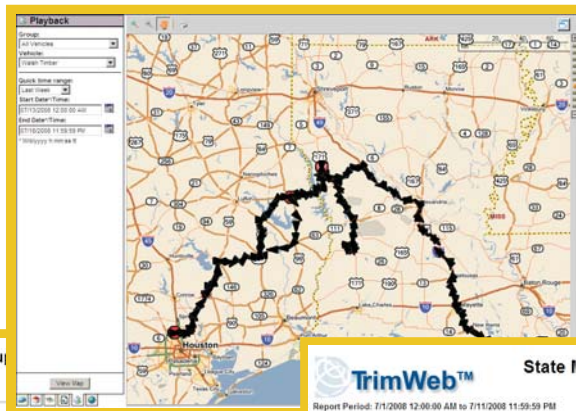
The State Mileage Report is accurate and easy to use. You can generate reports by either vehicle or state, making the information readily available in a format which best conforms to your company's needs. A report grouped by state shows the number of miles each selected vehicle traveled within a state's borders as well as the total number of miles your fleet drove in the state. A report grouped by vehicle shows the total number of miles each vehicle traveled, as well as the mileage within each state.

The TrimWeb solution is a cost-effective, web-based GPS Fleet Tracking System that provides a real-time outlook of the fleet via Internet. One of the Trimble Fleet Productivity & Management solutions, TrimWeb provides vehicle location and status, activity reports and a user interface that is easy to use and flexible to meet your needs as the company business grows.

TrimWeb State Mileage Report

Features

- Accurate reports available anytime
- Automatic state mileage calculation for each vehicle
- Reports can be generated by vehicle or by state making tax reporting easier
- Mileage and vehicle data securely stored for up to 13 months



TrimWeb™ State Mileage Report Grouped By State		
Report Period: 7/1/2008 12:00:00 AM to 7/11/2008 11:59:59 PM		
AR - Arkansas		
Vehicle	Country	Mileage
Walsh Timber	USA	28.2
		Total
LA - Louisiana		
Vehicle	Country	Mileage
Walsh Timber	USA	1194.0
		Total
MS - Mississippi		
Vehicle	Country	Mileage
Walsh Timber	USA	534.8
		Total
TX - Texas		
Vehicle	Country	Mileage
Walsh Timber	USA	1664.6
		Total

END OF REPORT

TrimWeb™ State Mileage Report Grouped By Vehicle		
Report Period: 7/1/2008 12:00:00 AM to 7/11/2008 11:59:59 PM		
Eastern Daylight Time		
Vehicle: C4		
State	Country	Mileage
VA - Virginia	USA	543.6
		Total
Vehicle: Ghadry1		
State	Country	Mileage
VA - Virginia	USA	31.9
		Total
Vehicle: Walsh Timber		
State	Country	Mileage
AR - Arkansas	USA	28.2
LA - Louisiana	USA	1194.0
MS - Mississippi	USA	534.8
TX - Texas	USA	1664.6
		Total

END OF REPORT

© 2008, Trimble Navigation Limited. All rights reserved. Trimble and the Globe & Triangle logo are trademarks of Trimble Navigation Limited registered in the United States Patent and Trademark Office and other countries. TrimWeb and TrimView are trademarks of Trimble Navigation Limited. @Road, the @Road logo and GeoManager are trademarks or service marks of @Road, a Division of Trimble. All other trademarks are the property of their respective owners.

DS-StatMlge-12Aug08US

@Road, a Division of Trimble
 47071 Bayside Parkway
 Fremont, CA 94538
 Tel: 1-877-728-7623
 www.road.com

Trimble MRM (India)
 AtRoad Software India Private, Ltd.
 901 (A1) & 902 (A2), Tidel Park
 No. 4 Canal Bank Road
 Taramani, Chennai 600 113
 Tel: 91 (44) 2254-1941
 www.road.com

Trimble MRM, Ltd. (EMEA)
 North Felaw Maltings
 48 Felaw Street
 Ipswich IP2 8PN, United Kingdom
 Tel: 44 (0) 1473-696-300
 www.road.com

Trimble MRM (APAC)
 Trimble Navigation Ltd.
 A102, 244 Beecroft Road
 Epping NSW 2121, Australia
 Tel : 61 (2) 98127900
 www.road.com

Trimble MRM
 3650 Concorde Parkway
 Suite 150
 Chantilly, VA 20151
 Tel : 1-877-883-4367
 www.trimble.com/tms