

## TRIMBLE GEOMANAGER

Trimble GeoManager is a cloud computing platform that provides a range of solutions enabling businesses of all sizes to improve productivity and increase profits while reducing operating costs. GeoManager offers visibility into day-to-day fleet operations to identify, manage and improve areas such as driver safety, customer service, back office administration, fuel use and fleet efficiency through four solutions.

### FLEET MANAGEMENT

Enables fleet managers to make intelligent decisions using real-time field status information. Fleet Management offers current location, diagnostics and exception alerts to help manage overall performance for fleets of any size in a number of industries.

#### Key Benefits

- Increase fleet productivity using real-time location intelligence.
- Decrease fuel costs and carbon emission activity by reducing unauthorized vehicle use, curbing excessive speeding and lowering idling.
- Reduce vehicle component wear and tear, which lowers risk of mechanical failure by tracking maintenance.
- Improve vehicle utilization and up-time with exception alerts and vehicle diagnostics.

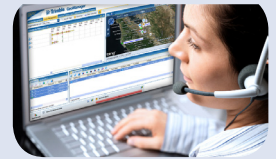


### WORK MANAGEMENT

Provides dispatchers and managers visibility into work schedules and mobile worker activities. Work Management helps companies assign in-day jobs based on real-time schedule status, which reduces overtime, improves customer satisfaction and increases jobs completed per day.

#### Key Benefits

- Improve efficiency by comparing planned vs. actual work done per day.
- Improve quality of service by adjusting schedules and reassigning work in jeopardy.
- Improve communication by issuing work orders online to a mobile worker who can receive jobs and update work status with a smart phone or laptop.
- Increase productivity by receiving work assignments without having to return to the office.



### DRIVER SAFETY

Allows fleet managers to proactively manage driving behaviors. Driver Safety helps companies identify and reward good drivers or coach drivers that put the company at risk.

#### Key Benefits

- Lower accidents and liability by improving driver safety.
- Improve public image by promoting a safe driver culture.
- Increase fuel savings due to fewer speeding incidents and fast acceleration starts.
- Improve productivity due to less vehicle down time and fewer driver injuries.
- Reduce operational costs by lowering fuel use and repair bills.
- Improve driver compliance using driver-style feedback over time.



### DRIVER LOGS HOURS OF SERVICE

Assists motor carriers with federal regulatory compliance. Driver Logs Hours of Service utilizes automatic duty status changes for greater compliance, reduced fines, increased accuracy and time savings.

#### Key Benefits

- Complies with AOB RD specifications per Federal Motor Carrier Safety Administration Regulation 395.15.
- Improves real-time ability to comply with Department of Transportation (DOT) rules, including 7/60 and 8/70.
- Provides one year of storage for your driver logs.
- Significantly reduces the time needed to generate driver logs required for DOT compliance.
- Reduces paperwork and improves accuracy of logs.
- Warns drivers of upcoming DOT violations, which helps avoid fines.



**Fleet Management Solutions**

	Fleet Management	Driver Safety	Work Management	Driver Logs Hours of Service
Vehicle Tracking	√			
Landmarks	√			
Vehicle Diagnostics	√			
Fleet Maintenance	√			
Fuel & Carbon Management	√			
Map View (Aerial, Bird's Eye, Traffic)	√			
On-Demand or Scheduled Reports	√			
Executive Consoles and Dashboards	√			
Exception and Alert Notification	√			
Role Based Access Control	√			
Multi-level Grouping (Organizational Hierarchy)	√			
In-Vehicle Driver Feedback & Coaching Tools		√		
Driver Safety Scorecard and Console		√		
Mobile Worker Management			√	
Planning and Scheduling			√	
Work Optimization			√	
Work Day Planner (Work Advisor)			√	
Performance Management Tools			√	
Wireless Dispatch (Work Management Mobile)			√	
Log Hours of Service (HOS) against state and federal rules				√
State Mileage Reporting	√			√
Manage HOS Violations				√
Diagnostics & Messaging Upgrade	0	0	0	0
Wi-Fi Upgrade	0	0	0	0
Data Integration	0	0	0	0
Extended Data Storage	0	0	0	0
Sensors	0	0	0	0
Trimble MRM University	√	√	√	√

**Trimble GeoManager Solution Features**

Features Unique to Solution	√
Optional	0

"GeoManager (Fleet Management) is like email; you wonder how you did business without it."  
**-Jerry Palmer, President of Southland Insulators"**

"We sit all our drivers down and give them a safety test, but there's nothing you can do about common sense. GeoManager helps us close that gap. I'd like to believe we've saved lives."  
**- Bob Jones, Fleet/Loss Prevention Manager, Universal Protection Services**

"Work Management is making our company more efficient. We are saving on fuel costs, improving our drive-time efficiency and increasing our number of ticket closures."  
**-Justin Keane, Vice President of Business Operations for Pacific Telemanagement Services**

"With Trimble Driver Logs, all our record keeping is right there—we just print it out and it's good to go."  
**-Bill Frye, Branch Manager of Baker Commodities**

**For more information about Trimble GeoManager solutions, visit [www.trimble.com/fleet](http://www.trimble.com/fleet), send email to [mrrinfo@trimble.com](mailto:mrrinfo@trimble.com) or call 1-877-728-7623.**



4141 Sladeview Cr. #11  
 Mississauga, ON  
 L5L 5T1

Phone: 905.826.1545  
 Toll Free: 866.356.3684

[sales@elntechnologies.com](mailto:sales@elntechnologies.com)  
[www.elntechnologies.com](http://www.elntechnologies.com)

© 2011, Trimble Navigation Limited. All rights reserved. Trimble and the Globe & Triangle logo are trademarks of Trimble Navigation Limited, registered in the United States Patent and Trademark Office and in other countries. GeoManager is a service mark of Trimble Navigation, Limited. All other trademarks are the property of their respective owners.

