

IMPROVE MOBILE WORKER PRODUCTIVITY AND REDUCE FUEL COSTS

Trimble GeoManager Fleet Management enables fleet managers to make intelligent decisions using real-time field status information. Using Trimble solutions, companies can improve fleet productivity using vehicle tracking and trip management tools, and reduce costs by lowering fuel use and improving asset use.

Fleet Management offers current location, diagnostics and Exception alerts to help manage overall performance for fleets of any size in a number of industries.



KEY BENEFITS

- Increase fleet productivity using real-time location intelligence
- Decrease fuel costs by reducing unauthorized vehicle use, curbing excessive speeding and lowering idling
- Reduce vehicle component wear and tear, which lowers risk of mechanical failure by tracking maintenance
- Reduce carbon emission causing activity such as speeding, excessive idling and route deviation
- **Reduce vehicle component wear and tear which lowers risk of mechanical failure**

"I would not want to operate my business without using the GeoManager service."

- Jerry Hellmann, President of American Furniture Rentals

"Now we can schedule more jobs in a day because Trimble MRM helps us to group them in areas that are close together."

- Nancy Dempsey, Vice President of Brennan's Heating & Air Conditioning



INCREASE JOBS COMPLETED PER DAY AND DECREASE VEHICLE DOWNTIME

Fleet Management helps you improve your fleet productivity by:

- Reducing unauthorized stops or vehicle use.
- Enabling direct communication with drivers and technicians.
- Increasing the amount of time vehicles are in productive use.

When using Fleet Management, your company can decrease fuel costs by reducing unauthorized vehicle use, curbing excessive speeding and idling and tracking maintenance, as well as decrease vehicle idling times by 50-90%.

Improved vehicle maintenance scheduling and performance not only reduces the amount of fuel used by your fleet, it increases the amount of time vehicles are in productive use. This increased asset utilization reduces vehicle component wear and tear, which lowers the risk of mechanical failure, increasing your company's profits even more.

IMPROVE BUSINESS INTELLIGENCE AND REDUCE ENVIRONMENTAL IMPACT

Using Fleet Management, you can improve your business intelligence with improved communication between dispatchers and field technicians, as well as reduce payroll and overtime costs with more accurate time-management tracking. It also reduces environmental impact by helping lower carbon emissions with trip reports detailing fuel use based on travel, idle and PTO times.

With real-time status information, Fleet Management improves overall customer satisfaction with faster and more accurate response times and better communication with customers and drivers about service call timing.

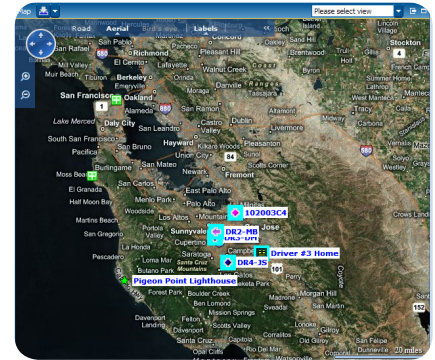
Fleet Management helps you improve your mobile workers productivity, increase your profit and decrease your company's impact on the planet.

FEATURES

- View the real-time status and locations of your vehicles or field technicians anywhere in the world
- Exception alerting - Includes speeding, idle time, Landmark entry/exit, stop count and duration, battery, distance driven, off-hours use
- Vehicle Diagnostics - Fuel, carbon, odometer and fault codes
- Configurable Reporting - on demand or scheduled
- Vehicle Maintenance Schedule Notifications
- Data integration to existing systems
- Messaging and Mobile Forms Driver Applications
- 24*7 Customer Support
- On-line self paced user training

LEARN MORE

For more information about GeoManager Fleet Management, visit www.trimble.com/fleet or contact your Trimble sales representative at MRMinfo@trimble.com or 1-877-728-7623.



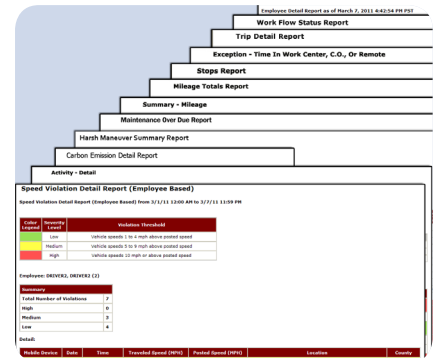
Map View - Shows real-time vehicle information.

Row	Date	Mobile Device	Exception Type	Exception I
1	March 7, 2011 9:40:50 PM PST	DR3-DM	Single Stop	Stop Duration
2	March 7, 2011 12:11:53 PM PST	DR3-DM	Low Battery	Fremont Low
3	March 7, 2011 9:37:25 AM PST	DR3-DM	Single Stop	Stop Duration
4	March 8, 2011 11:50:50 PM PST	DR4-JS	Stop Count	Supervisor St
5	March 8, 2011 11:50:50 PM PST	DR3-DM	Stop Count	Supervisor St
6	March 8, 2011 11:50:50 PM PST	DR4-RL	Stop Count	Supervisor St
7	March 8, 2011 7:34:16 PM PST	DR3-DM	Low Battery	Fremont Low

Exception Details

Please click any row from above to view details

Exceptions Alerts - Notifies managers when mobile workers act outside set parameters.



Reports - Allow managers to receive pertinent, timely information.



4141 Sladeview Cr. #11
Mississauga, ON
L5L 5T1

Phone: 905.826.1545
Toll Free: 866.356.3684

sales@elmsolutions.com
www.elmsolutions.com

