

CUT FUEL USE AND REDUCE OPERATING COSTS

Companies with field service, transportation or delivery vehicles face the ongoing concern of keeping down operating costs—especially fuel costs. Challenges include ever-increasing fuel prices, as well as excess fuel consumption from:

- Vehicles traveling outside planned routes
- Unauthorized side trips or after-hours vehicle use
- Speeding or excessive engine idling time
- Lack of proper maintenance/inefficient engine operation

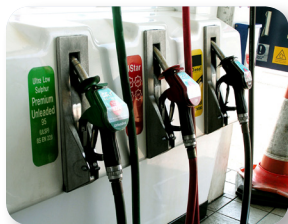
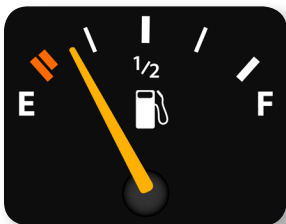
Trimble solutions can help your company cut excess fuel use and reduce operating costs through a number of efficiency-enhancing features with its GeoManager Fleet Management solution.

FLEET MANAGEMENT KEY BENEFITS

- Reduce miles driven by planning and monitoring efficient vehicle routes
- Cut fuel use by reducing unauthorized stops
- Decrease after-hours vehicle use
- Identify and correct excessive speeding or engine idling
- Find the closest vehicle to urgent customer requests to reduce fuel use
- Improve management of vehicle maintenance to retain greatest fuel efficient operation

"With GPS and vehicle management systems now installed in 5,000 vehicles, Cox saves more than 1 million gallons of fuel and at least \$2 million in fuel costs each year."

- Mark Leuenberger, Director of Fleet Operations, Cox Enterprises



MANAGE VEHICLE ROUTES

Using the Map View in Fleet Management, dispatchers and supervisors can review routes in real time, allowing them to quickly identify vehicles that waste fuel by deviating from the most direct path between scheduled stops. The Activity Detail report provides a comprehensive view of distances traveled by each vehicle, helping you identify areas that potentially use excessive fuel.

MONITOR UNAUTHORIZED FUEL USE

To control after-hours or unauthorized vehicle fuel use, Fleet Management provides Landmark Proximity Exception, Off-Hours Use and Stops reports, which are used to determine how close the vehicle stays to designated parking locations and to identify significant stops that are not associated with customer locations or other company-set Landmarks.

CURB SPEEDING AND ENGINE IDLING

Fleet Management also provides Exception reports for Speed and Idling to help maximize vehicles' fuel economy. With these reports, managers are instantly notified when vehicles are speeding or there is excess engine idling, so they can intervene and prevent unnecessary fuel use.

SAVE FUEL WITH IMPROVED MAINTENANCE

The U.S. Department of Energy estimates that companies can save from nine to 40 percent in miles-per-gallon when improving vehicle maintenance.[†] The Vehicle Maintenance feature helps

managers achieve these fuel savings by ensuring the scheduling of engine tune-ups, timely air filter replacement, regular oil changes and correct motor oil grade—as well as other types of maintenance—with customizable lists of items to track and definable thresholds for setting reminder alerts.

FUEL SAVINGS FEATURES

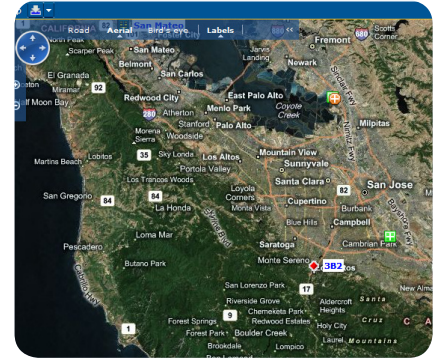
Fleet Management features and reports that help reduce fuel-related operating costs include:

- Interactive Map View functions
- Activity Detail report
- Stops report
- Speed Exception alert and report
- Idling Exception alert and report
- Off-Hours Use alert and report
- Maintenance Status report
- Maintenance Thresholds report, Notification emails
- Maintenance History report
- Maintenance Overdue report

ADVANCED FUEL SAVINGS

Fleet Management also offers more detailed reports for companies who want to measure vehicles' carbon emissions, miles traveled by state, fuel used during idling, PTO, and driving time. The optional, Advanced Fuel and Carbon reports offer:

- Carbon emissions data
- State mileage
- Detailed fuel usage



Fleet Management interactive maps allow you to see what routes your vehicles use.

Row	Date	Mobile Device	Exception Type	Exception Name
1	May 4, 2011 10:40:20 AM PDT	DR3-DM	Single Stop	Stop Duration 80 min.
2	May 4, 2011 9:21:12 AM PDT	DR3-DM	Single Stop	Stop Duration 80 min.
3	May 3, 2011 11:09:59 PM PDT	241-RL	Stop Count	Supervisor Stop Count 4/30
4	May 3, 2011 10:40:42 PM PDT	DR2-MB	Speed	More than 70 MPH for 2 Min
5	May 3, 2011 7:48:18 PM PDT	DR3-DM	Off Hour/Unauthorized Use	Weekday Hour All Vehicles

Exceptions alerts allow you to see when drivers are using vehicles outside business hours or allowing them to idle for extended timeframes.

Vehicle	Speed	Exceeds	Exceeds	Exceeds	Exceeds
DR2-MB	10/11	10/11	10/11	10/11	10/11
DR2-MB	10/11	10/11	10/11	10/11	10/11
DR2-MB	10/11	10/11	10/11	10/11	10/11
DR2-MB	10/11	10/11	10/11	10/11	10/11
DR2-MB	10/11	10/11	10/11	10/11	10/11
DR2-MB	10/11	10/11	10/11	10/11	10/11
DR2-MB	10/11	10/11	10/11	10/11	10/11
DR2-MB	10/11	10/11	10/11	10/11	10/11
DR2-MB	10/11	10/11	10/11	10/11	10/11

Fleet Management reports allow you to get information about maintenance, speed, idling, mileage and off-hours use.

[†] As reported by the U.S. Department of Energy April 15, 2011 at www.fueleconomy.gov, based on studies and literature reviews performed by Energy and Environmental Analysis, Inc., Washington, D.C.

TRIMBLE MRM (Americas)
888 Tasman Drive
Milpitas, CA 95035
Tel: 1-877-728-7623
www.trimble.com/fleet

TRIMBLE MRM (EMEA)
1 Bath Street
Ipswich, Suffolk
IP2 8SD, United Kingdom
Tel: 44 (0) 1473-696-300
www.trimble.com/ukfleet

TRIMBLE MRM (APAC)
Suite 1 Level 5
29-57 Christie St, St Leonards
NSW 2065, Australia
Tel: 61 (2) 8405 6730
www.trimble.com/fleet

TRIMBLE MRM (India)
Unit 312 Time Tower
MG Road, Gurgaon
Haryana, India
Tel: +91 124 4143303
www.trimble.com/fleet

TRIMBLE MRM (China)
311 Fute (M) Road
Wai Gaoqiao Free Trade Zone
Pudong, Shanghai 200131
Tel: 86-21-5046-4200
www.trimble.com.cn

ELM Technologies Ltd.
(905) 826-1545
www.elmtechnologies.com

